

RESOLUTION NO. 1952

A RESOLUTION OF THE CITY COUNCIL OF THE CITY OF SOLEDAD
AMENDING THE GENERAL PLAN (GP: 89-03 C.T.F.)

WHEREAS, by Resolution No. 89-12, adopted on November 8, 1989, the Planning Commission initiated a proposal to amend the General Plan as follows:

Add to the General Plan Land Use Element the designation of "Public" and applying the designation to the State of California's Correctional Training Facility (Soledad) and including the property within the City's Sphere of Influence.

and;

WHEREAS, on December 6, 1989, the Planning Commission held a Public Hearing upon said proposal in accordance with the requirements of Section 65353 of the Government Code.

WHEREAS, on December 6, 1989, the Planning Commission adopted Planning Commission Resolution No. 89-13 recommending the approval of the proposed General Plan Amendment.

NOW, THEREFORE, BE IT RESOLVED by the Planning Commission of the City of Soledad as follows:

Section 1. It is hereby found that notice of the public hearing held by the City Council on December 12, 1989, as set forth above, was given in the manner and form required by Section 65355, 65090, 65091, 65092 and 65094 of the Government Code.

Section 2. The City Council hereby approves General Plan Amendment 89-03:

1. Amending the General Plan Land Use Map as shown on Exhibit "A" attached and incorporated herein by reference, designating the California Correctional Training Facility (Soledad) as Public/Quasi-Public and adding the Facility to the City's Sphere of Influence.

2. Amending the General Plan Land Use Element Text as shown in Exhibit "B", attached and incorporated herein by reference.

Section 3. The reasons for said approval are as follows:

1. The State of California has adopted legislation (Section 56111.1) of the Government Code that allows the City of Soledad to annex the State property as a noncontiguous annexation.

2. A Negative Declaration for the proposed General Plan Amendment has been prepared and was posted on November 21, 1989.

3. The proposed General Plan Amendment is consistent with the existing, revised General Plan policies and programs.

4. The proposed General Plan Amendment will have no effect on traffic generation potential from the site and no traffic impact will be generated by the General Plan Amendment.

5. The proposed General Plan Amendment will not effect air quality in the air basin and will not increase the potential for additional air pollution.


6. The proposed General Plan Amendment will not be detrimental to the public's health, safety, and welfare.

PASSED AND ADOPTED at a regular meeting of the City Council of the City of Soledad at a regular meeting duly held on the 12th day of December, 1989, by the following vote:

AYES, and in favor thereof, Councilmembers: Campos, Holguin, Ledesma, Mayor Pro Tem Untalon, Mayor Ortiz

NOES, Councilmembers: None

ABSENT, Councilmembers: None


MAYOR OF THE CITY OF SOLEDAD

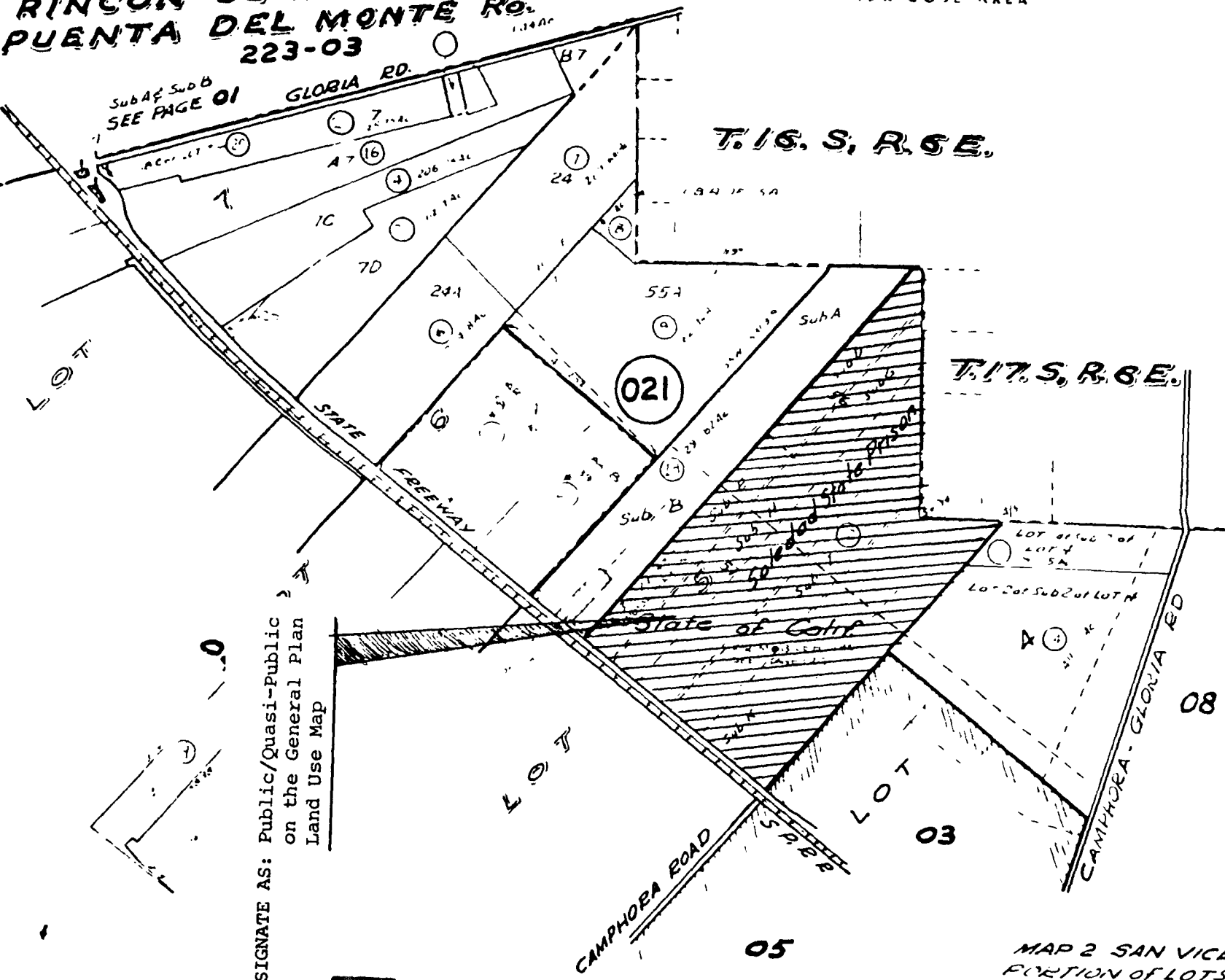
ATTEST:


CITY CLERK OF THE CITY OF SOLEDAD

RINCON DE LA PUENTA DEL MONTE RO. 223-03

TAX CODE AREA

COUNTY OF MONTEREY ASSESSOR'S MAP BOOK 257 PAGE 02



DESIGNATE AS: Public/Quasi-Public on the General Plan Land Use Map

Scale 1/4" = 300ft

EXHIBIT - A
CITY COUNCIL RESOLUTION #1952
General Plan Amendment 89-03
C.T.F.

MAP 2 SAN VICENTE RD PORTION OF LOTS 5, 6 & 7

EXHIBIT B - General Plan Text Revision
City Council Resolution 1952
General Plan Amendment 89-03

Revising the deffinition for Public and Quasi-Public
Facilities (Page 20) from:

Public and Quasi-Public Facilities:

These include government buildings, libraries,
churches, hospitals and schools.

to:

Public and Quasi-Public Facilities:

These include government buildings, libraries,
churches, hospitals, schools and property owned
or operated by Public Agencies for public
purposes.